

Aquila 46 Coupe Power Catamaran Specifications

Length overall	14.44 M / 47' 4"
Beam overall	5.46 M / 17' 11"
Height above waterline w/hard top excl. electronics	3.36 M / 11' 0"
Draft with outboards and inboards up with foil	1.08 M / 3' 7"
Draft with outboards down with foil	1.13 M / 3' 9"
Draft with inboards down with foil	1.23 M / 4' 1"
Approx Dry Weight (Dual V12-600hp engines)	14,500 KG / 31,970 LB
Cabins	2
Heads with separate showers	2

Tankage

Fuel tank (total)	2,334 L / 616 GAL
Water tank (standard, total)	440 L / 116 GAL
Holding tank (total)	160 L / 42 GAL

CE Certification

B (offshore) - 12 PAX
 C (coastal) - 22 PAX
 D (inland) - 32 PAX

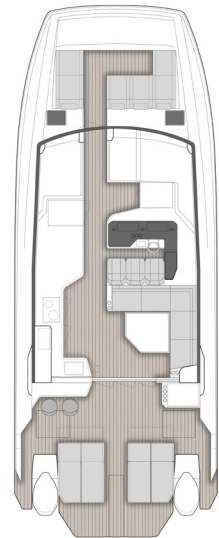
Propulsion

Standard	2 x 600hp Black Mercury Verado V12 with JPO
Optional	2 x Volvo Penta D6-440hp DPI sterndrive diesel engines

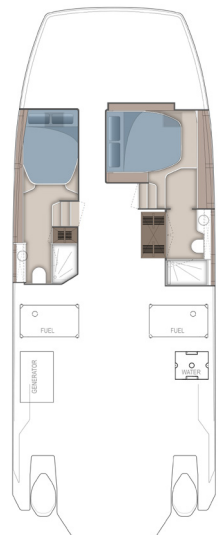
Construction

- Resin infused Vinylester throughout hull and deck build material
- Resin infused Vinylester throughout bulkhead and reinforcing. No plywood in structural components or below waterline
- PVC Core Materials vary in density dependent on loads
- NPG gelcoat of hull
- Water tight bulkheads fore and aft
- Carbon fiber primary main foil (semi foiling)

All specifications and options are subject to change by Sino Eagle Yachts at their sole discretion. Performance is purely indicative and not a contractual commitment. Performance is subject to many variances outside the control of Sino Eagle Yachts. Specifications and graphics in this brochure are non-binding and customer must enter into contractual agreement with the Dealer or Agent of Record.



MAIN DECK



CABINS

Features

- An exceptional performing and seaworthy double stepped hull shape providing first in class stability and fuel efficiency
- Aquila Hydro Glide carbon fiber semi foiling system providing first in class performance, comfort, and fuel efficiency
- The perfect balance of indoor and outdoor spaces, all in a single level living package
- Spacious interior cabins with large hull side windows offering excellent views of the water
- Expansive electric opening fiberglass sunroof providing protection from sun and weather (option)
- C-Zone digital switching system for DC powered components
- Ability to choose between Mercury outboard power or Volvo Penta diesel propulsion
- Easy access on and off from docks with standard port and starboard opening cockpit doors

Interior Layout

- Single level deck plan with large cabins in each hull
- Master cabin in starboard hull with VIP cabin in port hull - each with walk in shower, vanity area, and fresh water flush toilet
- Salon area with L-shaped seating to starboard, electric retracting table which goes flush with deck when not in use
- Large tempered glass windows offering full 360 degree views
- Sliding aft salon door with separate opening flip up bar window (converts to bar when open)
- Galley area to port with microwave, sink, storage cabinets, and flip up bar window area
- Carbon fiber central electric actuated hatch/door providing access to forward bow seating
- Comfortable helm seating for three providing spacious seating for captain and two passengers

Hull and Deck Features

- Double stepped hull design offering best in class offshore handling capabilities
- Carbon fiber Aquila Hydro Glide semi-foiling system
- Comfortable and protected bow seating that comfortably seats up to 4 passengers with arm rests and leg supports
- Two (2) large aft convertible sun loungers providing ability to sit facing forward or convert to sun lounger with storage below
- Designated area for optional electric BBQ

- Stainless steel handholds in AIS316
- Opening port lights installed in hull side windows (4 total)
- Port and starboard side boarding gates
- PVC rub rail with 316 stainless steel insert offering all round protection
- Windscreen in tempered glass with variable speed windscreen wiper
- Bow deck hatch allowing access to anchor chain area and windlass
- Deck fill plates in 316 stainless steel - 1x water - 2x fuel - 2 x waste
- Stainless steel mooring cleats thru bolted (12 Total)
- Well placed ergonomic handrails in 316 stainless ensuring secure movement onboard
- LED navigation lights, running lights and anchoring light
- Custom stainless steel retractable swim ladder with teak steps at aft deck swim platform
- Aft cockpit and bow area all self draining
- Optional synthetic marine decking throughout all main level exterior and interior deck space
- Aft cockpit with heavy duty stainless steel sliding door with flip up bow counter window
- Mechanical room/diesel engine access through large deck hatches
- LED courtesy lighting located throughout
- Easy lift gas shocks for all large hatches

Aft Deck and Cockpit

- Sliding glass door with opening window bar area, lockable with threshold - entrance to salon
- Bar area with 3 x 316 stainless steel bar stools and large hinged window to open up galley
- Two large sun loungers with convertible back rest and storage inside
- Mechanical/diesel engine room access from deck hatches
- Marine waterproof 7.7" Fusion speakers (4)
- Fusion system wireless remote control
- Port and starboard side boarding gates with robust stainless steel hinge and fittings
- LED courtesy lighting
- Overhead LED lighting
- Starboard side storage module with optional BBQ and fridge/freezer
- Integrated side deck steps providing easy access to raised side decks
- Stainless steel gates (2) on port and starboard side
- Optional retractable canvas sunshade system with canvas material

- Self draining cockpit area
- Concealed shore power plug access and fresh water washdown connection
- Slide out stainless steel swim ladder with teak steps
- Fresh water pull out shower (hot/cold)

Mooring System

- Electric windlass (24v-1500W) with hard wired handheld control at anchor locker
- Polished stainless steel 44lbs anchor with rope(200ft), galvanized anchor chain(49ft)
- Mooring kit - 6 x fenders and 6 x mooring lines

Forward Bow Seating

- Central electric walkthrough opening hatch/door manufactured in carbon fiber materials to increase strength and reduce weight providing access to bow seating
- Forward facing seating with head rests and flip down arm rests
- Adjustable leg support for seats
- Cup holders (8)
- Stainless steel handrails
- Wireless chargers (2)
- Concealed storage areas to outboard sides for cell phone and cup holders
- Integrated LED courtesy lighting
- Marine waterproof 7.7" speakers (2)
- Hidden flip down table
- Optional synthetic marine decking
- Central hatch for access to windlass/anchoring system with separate chain locker hatch
- Port and starboard hatches providing wet storage space for fenders and mooring lines
- Storage lockers located under port and starboard seating

Interior Helm Console / Seating

- Comfortable carbon helm seating including flip up bolsters and electric seat sliders
- Cup holders (3)
- AC vents for direct air flow (aircon optional)
- Black acrylic helm panel for flush mount electronics installation
- Wireless phone chargers (1)
- Stainless steel hand hold
- Recessed foot rests
- Manual slide opening window next to helm
- Variable position steering wheel offering multiple function use controls at your finger tips
- Magnetic compass

- USB and USB-C outlets
- Windshield wiper system connected to fresh water supply with control at helm
- Ergonomically positioned throttle and joystick controls

Salon / Galley

- Electric blinds for port and starboard side windows
- Laminate finished cabinetry with solid wood capping throughout with accented wall and ceiling coverings
- Electric retracting table which goes flush with deck when not in use
- Multi-Zone sound system with Fusion head unit and 4 x flush mounted 7.7" speakers
- Upholstered panel ceilings with decorative LED accent lighting
- Comfortable L-shaped seating to starboard
- Wireless chargers (2)
- Cup holders (4)
- Optional expansive electric sunroof
- Designated drop down TV system from ceiling (option)
- Carbon monoxide alarm
- Galley area to port side including:
 - Corian work surface
 - 130L/4.5 cu. ft. fridge/freezer
 - 30L/1.1 cu. ft. microwave
 - Storage drawers and cabinets throughout
 - Wash basin with stainless steel faucet
 - AC power outlets
 - Manual sliding window
 - Integrated stainless steel handrails under Corian countertops
- Optional synthetic marine decking

Owner and VIP Guest Cabin (owner cabin on starboard side)

- Large hull side window providing natural light into cabin with manual operated blinds
- Laminate finished cabinetry with solid wood capping throughout with accented wall and ceiling coverings
- Private access door to cabin for privacy
- Aircon vents with aircon display/controller (option)
- Opening ventilation hatch in ceiling with concealed blind
- LED reading lights (2)
- LED overhead ceiling lights
- Storage shelves, lockers and drawers with additional storage under cabin mattress
- Memory foam mattress

- Cabin mattress size: Master cabin: 77in (196cm) x 65in (165cm) VIP guest cabin: 79in (201cm) x 62in (160cm)
- Wireless chargers - one in each cabin
- Each cabin with Fusion head unit and 2 x 7.7" ceiling mounted speakers
- Synthetic wear resistant flooring offering maintenance free natural look
- AC power sockets and USB outlets (2)
- Upholstered panel ceilings with decorative LED accent lighting
- Carbon monoxide alarm
- Large hanging locker with storage
- Separate bathroom/shower area including:
 - Hull side window with blind
 - Opening portlight window for ventilation
 - Bathroom vanity with sink and faucet
 - GFCI protected outlets
 - Toothbrush and towel holders
 - Corian countertop
 - Fresh water electric flushing toilet
 - Walk in shower with door and port light opening window
 - Mirrors above vanity

Mechanical / Diesel Engine Rooms (diesel engines optional)

- Automatic fire suppression heat activated system with alarm monitor(s) at helm station
- Engine fuel system filters
- LED lighting
- Thru hulls with strainers for water supply to primary equipment
- Automatic bilge pump in each engine room
- Excellent all around engine and systems access for ease of maintenance
- Additional storage for storing water toys and water sports equipment

Electrical System

- C-Zone DC digital switching system
- Inverter/battery charger Mastervolt 24/3500W (1)
- Master control panel for 24v and shore power service
- Dedicated engine battery chargers
- Remote battery master switches at panel
- Engine parallel control remote switch
- Dedicated engine start batteries (2 x AGM)
- House batteries = 4 x 230 A/h AGM
- Shore side electrical system
- Concealed 50A shore power supply inlet (1)
- Galvanic Isolator protection system

Fuel System

- Fully independent Heavy Gauge aluminum tanks totaling 2334 Liter/616 US G with gauge at helm station
- Manual fuel shut off valves
- Fuel tank vents
- Natural ventilation of locker
- Water and air tight bulkhead separating cabin area
- Fuel filters

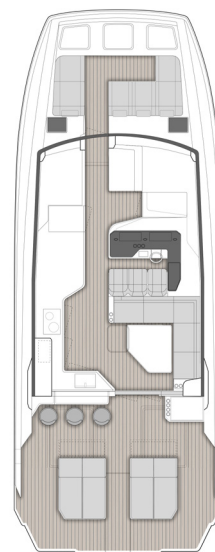
Water and Bilge System

- Automatic 24v fresh water pump
- Water heater (1) @ 40L/10.5Gal (only operable from shore power and/or optional generator)
- 1 x 440 Liter/116 US G fresh water tank
- Transom pull out shower mixer (hot/cold)
- Automatic 24 v bilge pumps (6)

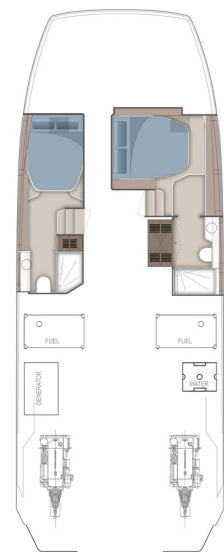
Waste System

- Automatic grey water pump connected to each shower drain for direct overboard discharge
- 2 x 80L/21Gal black water tanks with sea discharge pumps and dockside pump out
- Black and fresh water levels visible through C-Zone systems

Optional Configurations:



MAIN DECK
(Inboard Engines)



CABINS
(Inboard Engines)